

EVOLUTION

One-Touch Filling System For Instrument Sinks And Tubs

- Automated Sink/Tub Filling
- 4 Selectable Cleaning Solution Concentrations with Fill Volumes
- Prevents Overflowing
- Management Reports for Monitoring Solution Change Frequency and Cleaning Solution Quality
- Built-in Soak Timer
- Comes with 180° Swivel Faucet or 8-ft Flexible Fill Hose
- Precise Flow Metered Blending



PATENT PENDING

The Evolution™ is a major advancement in the manual instrument cleaning process. With the press of its start button, Evolution automatically fills the instrument sink, tub or basin with the precise amount of instrument cleaner and water to the correct working level. The large LCD display provides real time alarms for solution temperature, dosing amounts, out of cleaning solution status and sink activity. The Evolution

includes soak timer, which allows users to set a specific amount of time for the medical instruments to soak before the final cleaning and rinsing stage. The unit also includes a USB port for downloading management reports.

EVOLUTION

One-Touch Filling System For Instrument Sinks And Tubs



The Knight Evolution is a blend of advanced engineering and innovative technology designed to automate the process of filling instrument sinks and tubs. Using Evolution at your facility increases technician productivity while achieving consistent cleaning solution quality for optimum results. This smart system logs all usage activities providing the CSSD manager useful information for managing staff and cleaning solution quality.



One-Touch Filling

- Conserves water
- Eliminates overflow, never over flow the sink/tub again!
- Saves time by freeing up technician for other tasks
- Assures the accuracy of instrument cleaning solution time after time

Ease of Operation

- Just press START
- 4 selectable fill levels and concentrations
- Fill instrument sinks/tubs with the precise ratio of cleaning solution and water
- Eliminate measuring/blending formula errors

Built-in Soak Timer

- Soak timer with audible alarm alerts the technician when soak time is complete

Fill Sinks or Tubs with Rigid Spout or Flexible Hose



Over-the-Sink Swivel Faucet



OR

Fill Tubs w/Flex Hose



Fill Gun Hooks to Tub or Sink



Productivity / Quality Reports

- Quick access to productivity and quality reports with USB memory stick.
- Open report in any text editor program for viewing, trending, analysis or infection control audits.
- Evolution records all formula batching activity including date, time, formula, total volumes, temperature and any errors that occur.

Dispenser S/N: 0000000

Report Date: 05/10/15
From Date: 05/10/15
To Date: 05/10/15

Date	Time	Formula(%)	Water in L	Chem. in ml	Temperature	Errors
05/10/15	10:23:23AM	1.00	0000.9	0010.0	0020	
05/10/15	10:23:37AM	2.00	0001.9	0040.0	0020	
05/10/15	10:30:55AM	5.00	0004.7	0250.0	0020	

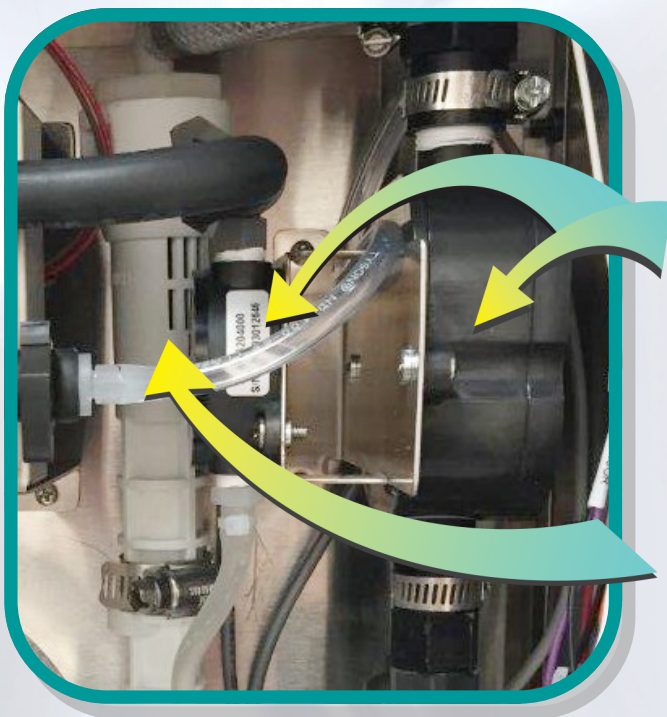
Chem. Usage: 000.3 Liter
Water Usage: 007.5 Liter

Dispenser S/N: 0000000

Report Date: 05/10/15
From Date: 05/10/15
To Date: 05/10/15

Date	Time	Formula(oz)	Water in G	Chem. in oz	Temperature	Errors
05/10/15	10:48:03AM	1.00	0000.9	0001.0	0069	Out of Temprange
05/10/15	10:48:56AM	2.00	0001.9	0004.0	0068	Out of Temprange
05/10/15	10:50:12AM	5.00	0004.7	0025.0	0068	Out of Temprange

Chem. Usage: 000.2 Gallon
Water Usage: 007.5 Gallon



Precision Flow Metering

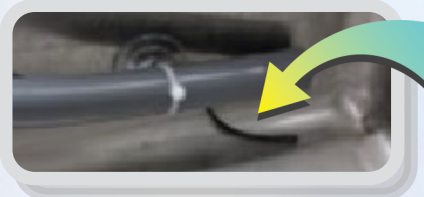
Evolution's patent pending chemical blending process relies on precise proprietary flow meter design, advanced electronics and unique software algorithms to compensate for variations in water pressure and assure precise concentrations of chemical in the blended cleaning solution. Closed loop communications from flow meter to controller provides constant feedback of the process and accurate, useful logged data.

Flex Gap Backflow Preventer

Evolution comes standard with our Flex Gap backflow preventer (pipe interrupter w/atmospheric vent) and meets the DB Type valve suitable for up to Category 4 (Conforms to EN 1717). Flex Gap also meets the IAPMO and ASSE standards for backflow prevention.

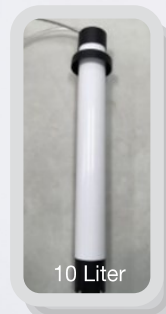
Temperature Sensor

- Alert the technician when the cleaning solution is out of range
- Allows the user to adjust the cleaning solution temperature for optimum results



Low Level Sensors

- Alerts technician to replenish detergent container.



Product Specifications

Specification	Description
Cabinet materials	#304 stainless steel
Case rating	IP-X0 equivalent
Power supply	Wall Mount Type, In: 100-240 VAC 1A 50-60 Hz Out: 24 Volts DC 1.67A
Backflow Preventer	Pipe interrupter with atmospheric vent and moving element DB Type valve suitable for up to Fluid Category 4 Conforms to EN 1717 (KIWA Approvals)
Solution discharge hose	PVC, 8 feet (2.44 meters)
Faucet Spout	Chrome plated copper
Unit dimensions/weight	11" H x 9" W x 7.1" D/16 lbs 28 cm x 23 cm x 18 cm/7.25 kg
Electrical Safety	CAN/CSA-C22.2 No. 61010-1-04 UL Std. No. 61010-1 (2nd Edition) EN 61010-1:2010



Ordering Information

Part Number	Model	Description
7260067	E-16-FH9	Cleaning solution blending/batching system with flexible solution hose, power supply (UK, US, EU, AP adaptors), USB port, installation accessories and Flex Gap backflow preventer
7260068	E-16-SBE	Cleaning solution blending/batching system with 180° swivel faucet, power supply (UK, US, EU, AP adaptors), USB port, installation accessories and Flex Gap backflow preventer
7600454		5 Liter container shelf kit
7110202		5 Liter level sensor (long)
7110204		5 Liter level sensor (short)
7110203		10 Liter level sensor
7110176		15" Level sensor w/o suction tube

Knight LLC
15340 Barranca Parkway
Irvine, CA 92618 USA
www.KnightHC.com

Knight USA
Tel (949) 595.4800
Fax (949) 595.4801

Knight Europe
Tel +44 (1273) 402.780
Fax +44 (1273) 402.781

Knight Australia
Tel +61 (2) 4223.7450
Fax +61 (2) 4271.8136



FM603289

Knight Canada
Tel (905) 542.2333
Fax (905) 542.1536

Knight North Asia
Tel +82 (2) 3481.6683
Fax +82 (2) 3482.5742

Knight South Asia
Tel +65 9170.0984
Fax +65 6489.6723