

SCOPETECH^{DF}



Built-in Automated Scope Inflation
for Water Immersion Leak Test



Integrated Detergent Pump
Doses the Right Amount and Tracks Detergent Conditions



2 Flushing / Rinsing Ports
With Single or Dual Mode Operation



Cleaning Sequence Control
Promotes Consistent Processing While Recording



Scope Inflation and Cleaning Process Reports
Windows compatible software and Excel reports



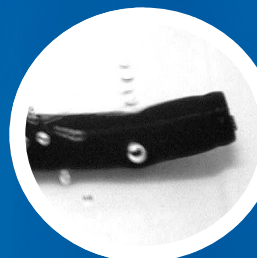
Sequence and Express processing modes
Simple and Easy to Use



Compact, Watertight Cabinet Mounts
Allows for mounting on a wall or counter top



Eliminates Technician Muscle Fatigue
Quiet and Efficient Pumping through Endoscope Channels



4-in-1 Flexible Endoscope Cleaning System

Scope Inflation, Detergent Dosing, Channel Flushing, and Reporting

The new ScopeTech DF is a comprehensive flexible endoscope cleaning system that dramatically improves the speed of endoscope reprocessing while providing step-by-step cleaning process management, cycle validation, and reports.

ScopeTech DF offers an automated, hands-free method for pressurizing your scope for an immersion leak test, 2

flushing ports with pulsating flow technology to remove bioburden, and precision detergent dosing to achieve optimum results with manual cleaning. An optional bar-code scanner tracks scope serial number and technician I.D.s to ease documentation and reporting burdens for GI Technicians.

www.knightequip.com

KNIGHT[®]

ScopeTech DF Improves Compliance

Operating Modes

Advanced “Sequence” mode requires technicians to input a personal I.D. and endoscope serial number to start the inflation test and cleaning operation. Technicians then step through the timed cleaning sequence following the programmed sequence each and every time.

Basic “Express” mode is for pre-cleaning operations where speed or simplicity of the pre-cleaning operation are preferred or where cleaning of two endoscopes at once is required.

Cycle Validation Reports

On the User Interface

ScopeTech DF reports can be viewed on the user display and provide managers fast and easy insight into scope pre-cleaning activities and performance. Records are sorted by endoscope type/model and serial number.

On your PC

Printable report content saved in ScopeTech DF is retrieved using a USB flash drive then uploaded to the ScopeTech Windows compatible software tool installed on a laptop or desktop PC. Reports provide management validation of the inflation test, channel flushing and detergent dosing operations as well as confirmation of dates, times and technicians responsible for processing. Reports can be exported to Excel for printing or sharing with others.

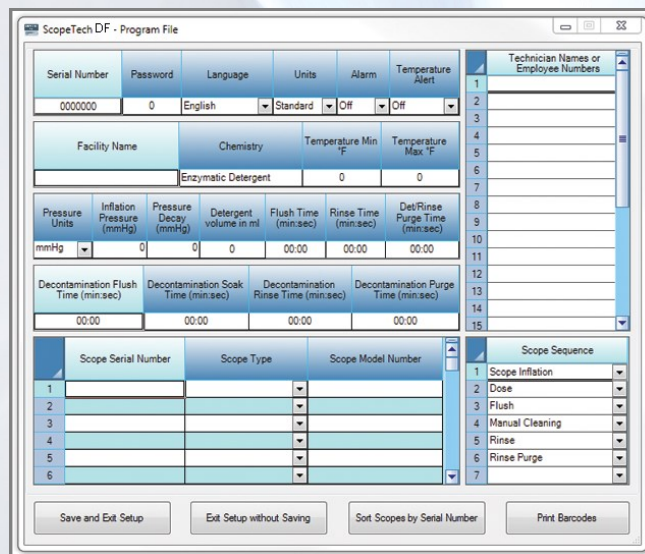
	A	B	C	D	E	F	G	H	I	J	K	L	M	N	O	P	Q	R	
1	<div>KNIGHT®</div>			Report Created:	Report Dates: (From-To)		Technical I.D.		1	JOHN				14					
2				1/1/2013 10:31:08 AM	1/5/2013	3/12/2013			2	MARY				15					
3									3	JANE				16					
4				Serial Number:	0000000				4	AMANDA				17					
5				Facility Name:	Hospital				5	BILL				18					
6				Chemistry	Detergent				6	STEVE				19					
8	Summary Report																		
9	Total Chemistry Used:			1.29 Gallons		# Scopes Processed by Technician	Technical Productivity												
1							2	3	4	5	6	7	8	9	10	11	12	13	
10	Total Scope Processing Days:			40			107	59	0	0	0	0	0	0	0	0	0	0	0
11							14	15	16	17	18	19	20	21	22	23	24	25	
12						3	3	3	3	3	3	3	3	3	3	3	3		
13																			
14	Scope #	Scope Serial #	Scope Type	Scope Model Number	Total Cycles Per Scope	Chemistry Used Gallons	<div>Red highlighted cycle errors provide a simple and fast way to identify processing mistakes/issues.</div>												
15	1	1234567	Gastroscope	ADG-1D2E	23	0.18													
16	2	7654321	Gastroscope	ZSV-9T8R	25	0.19													
17	3	1357913	Gastroscope	AJB-4E	20	0.15													
18	4	2468024	Colonoscope	KF-92R	22	0.17													

	A	B	C	D	E	F	G	H	I	J	K	L	M	N	O	P	Q	R		
1	<div>KNIGHT®</div>			Report Created:	Report Dates: (From-To)	Technical I.D.		1	JOHN					14						
2				1/1/2013 10:31:08 AM	1/5/2013	3/12/2013			2	MARY					15					
3									3	JANE					16					
4				Serial Number:	0000000				4	AMANDA					17					
5				Facility Name:	Hospital				5	BILL					18					
6				Chemistry	Detergent				6	STEVE					19					
8	Cycle Report																			
14	Scope #	Scope Serial #	Scope Type	Scope Model #	Technician I.D.	Date	Time	Inflation Test (m:s)	Dose (ml)	Flush Time (m:s)	Flush Volume Gallons	Flush Temp °F	Rinse Time (m:s)	Rinse Volume Gallons	Det/ Rinse Purge Time (m:s)	Total Cycle Time (m:s)	Process Completed (yes/no)	Errors		
15	1	1234567	Gastroscope	ADG-1D2E	6	1/5/2013	1:54 PM	00:38	30.0	00:30	0.97	113.0	3	0.45	00:40	02:18	Yes			
16	5	7654321	Colonoscope	ZXV-9T8R	3	1/5/2013	2:00 PM	00:10	30.0	00:30	0.95	93.0	00:30	0.39	00:40	02:27	No	Flush Temp Low		
17	2	1357913	Colonoscope	AJB-4E	2	1/5/2013	2:05 PM	00:45	30.0	00:30	0.91	113.0	00:30	0.40	00:40	02:25	Yes			
18	6	2468024	Colonoscope	ZXV-9T8R	5	1/7/2013	2:17 PM	00:21	30.0	00:30	0.88	105.0	00:30	0.39	00:40	02:01	Yes			
19	3	3692581	Colonoscope	KF-92R	3	1/7/2013	2:30 PM	00:23	30.0	00:30	0.96	114.0	00:30	0.45	00:40	02:03	Yes			
20	1	4826048	Gastroscope	GK-56R	4	1/7/2013	3:21 PM	00:57	30.0	00:30	0.95	114.0	00:30	0.40	00:40	02:37	Yes			
21	1	2911444	Gastroscope	GT-4P3	2	1/9/2013	4:50 PM	01:04	30.0	00:30	0.98	114.0	00:00	0.00	01:20	02:54	No	Incomplete Cycle		

e with Endoscope Cleaning Protocols

Settings

ScopeTech DF settings can be programmed on the user interface or by using the Windows compatible programming/reporting software. Settings are uploaded to the system via a USB flash drive and logged cycle data is retrieved the same way.



Barcode Scan Functions



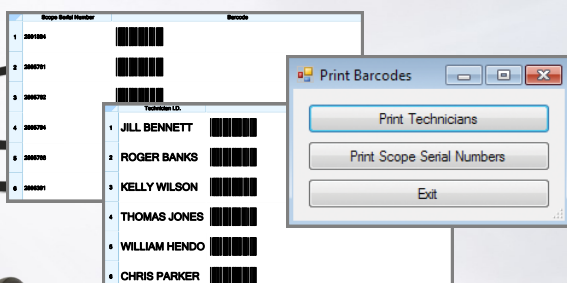
Scan technician names and endoscope serial numbers quickly and easily.



PC software automatically generates barcodes for technicians and scopes.



Print barcode pages from PC software and post in a booklet or on the wall above the sink for convenient scanning.



Product Specifications

Specification

Description

Cabinet Materials #304 Stainless Steel, Powder Coated

Dimensions 9 3/4" H x 7 1/8" W x 8 3/4" D
24.76 cm x 18.09 cm x 22.22 cm

Case Rating IP-55

Flush Pump Flow Rate .3 GPM (1.13 LPM)

Flush Pump Suction Maximum suction height = 24"/61 cm

Dosing Pump Flow Rate 10 oz./min (29.6 ml/min.)

Inflation Test Pressure 2.5-3 PSI (.17 - .27 bar)

Power Supply/Voltage Wall Mount Type, IN: 100-240 Volts AC
0.8A 50-60 Hz, Out: 24 Volts DC 1.25A

Chemical Compatibility-Flush Pump Industry standard enzymatic and other detergents in diluted form. Do not use Isopropyl Alcohol with the flush pump.

Chemical Compatibility-Dose Pump Industry standard enzymatic and other detergents.

Flush Tubes/Hook Up's Compatibility Industry standard enzymatic and other detergents in diluted form. Do not use Isopropyl Alcohol with the flush pump.

Unit Weight 13.3 lbs. (6.06 Kg)

Temperature Sensor Max temperature = 160° C

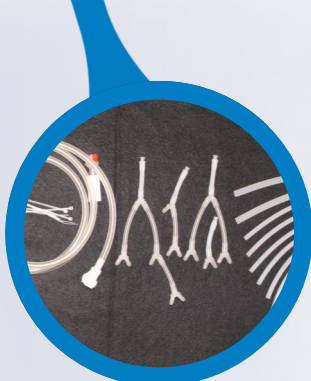
Fuse 2 Amp

Approvals CSAus, CE Standard: CAN/CSA-C22.2
No. 61010-1 UL Std.
No. 61010-1 IEC 61010-1

Product Testing CSA International, Irvine CA

Settings

ScopeTech DF comes with a complete set of endoscope irrigation flushing tube assemblies for Olympus, Pentax, Fujinon and Storz flexible endoscopes.



Inflation Test Kit, Olympus
7117161-0



Inflation Test Kit, Fujinon
7117161-F



Inflation Test Kit, Pentax
7117161-P



Inflation Test Kit, Karl Storz
7117161-S

Product Specifications

Part Number	Description
7260010	ScopeTech DF Flexible Endoscope Cleaning System with barcode scanner, flow meter, temperature sensor, low voltage power supply, international plug adapters, and accessory kit.
7260011	ScopeTech DF Flexible Endoscope Cleaning System without barcode scanner, flow meter, temperature sensor, low voltage power supply, international plug adapters, and accessory kit.
7117161-0	Inflation Test Kit, Olympus
7117161-F	Inflation Test Kit, Fujinon
7117161-P	Inflation Test Kit, Pentax
7117161-S	Inflation Test Kit, Karl Storz

KNIGHT®

Knight LLC
20531 Crescent Bay Drive
Lake Forest, CA 92630 USA
www.knightequip.com



FM603289

Knight USA
Tel (949) 595.4800
Fax (949) 595.4801

Knight Canada
Tel (905) 542.2333
Fax (905) 542.1536

Knight Europe
Tel +44 (1273) 402.780
Fax +44 (1273) 402.781

Knight North Asia
Tel +82 (2) 3481.6683
Fax +82 (2) 3482.5742

Knight South Asia
Tel +65 9170.0984
Fax +65 6489.6723